



# IJEAST

INTERNATIONAL JOURNAL  
OF ENGINEERING APPLIED SCIENCE  
AND TECHNOLOGY



**VOLUME : 3    ISSUE : 03    Print / Issue Publication Date: 23-Oct-2018**



**ISSN : 2455-2143**



Indexed In



[WWW.IJEAST.COM](http://WWW.IJEAST.COM)

[editor@ijeast.com](mailto:editor@ijeast.com)



# Performance and design optimization of solar powered Stirling engine using genetic algorithm

Abdalazeem Adam

Department of Mechanical Engineering  
 College of Engineering, Karary University, Omdurman, Sudan

Tagelsir Hassan

Department of Mechanical Engineering  
 Omdurman Islamic University, Omdurman, Sudan

Osama Mohammed Elmardi Suleiman  
 Department of Mechanical Engineering  
 Nile Valley University, Atbara, River Nile, Sudan

**Abstract**— The aim of this work is to optimize the design and performance of solar powered  $\gamma$  Stirling engine based on genetic algorithm (GA). A second-order mathematical model which includes thermal losses coupled with genetic algorithm GA has been developed and used to find the best values for different design variables. The physical geometry of the  $\gamma$  Stirling engine has been used as an objective variable in the genetic algorithm GA to determine the optimal parameters. The design geometry of the heat exchanger was considered to be the objective variable. The heater slots height, heater effective length, cooler slots height, cooler effective length, re-generator foil unrolled length and re-generator effective length are assumed to be the objective variables. Also, three different types of working fluids have been used in the model simulation to investigate the effect of the different working fluid on the engine performance. The comparison between the results obtained from the simulation by using the original parameters and the results from the optimized parameters when the engine was powered by solar energy; the higher temperature was 923 K applied to the working fluid when the air, helium, and hydrogen were used as working fluid. The engine power increases from 140.58 watts to 228.54 watts, and it is enhanced by approximately 50%, when the heating temperature is 923 K and the air is used as working fluid. The result showed that the working temperature is one of the most important parameters; because the output power increases by increasing of the hot side temperature.

**Keywords**— low temperature differential (LTD) Stirling engine; genetic algorithm (GA); coolers and heat pumps (CHP).

Nomenclature	Description
A	area (m <sup>2</sup> )
C <sub>p</sub>	specific heat (kJ/kg K)
D	diameter (m)
f	frequency (Hz)
h	convection heat transfer coefficient (W/m <sup>2</sup> K)
m	mass (kg)
NTU	number of transfer unit
P	power (W)
P <sub>r</sub>	Prandtl number
p	pressure (kPa)
Q	heat energy (J)
R	gas constant (kJ/kg K)
Re	Reynolds number
f <sub>r</sub>	friction factor
d <sub>h</sub>	hydraulic diameter (m)
T	temperature (K)
u	gas velocity (m/s)
V	volume (m <sup>3</sup> )
W	work energy (J)

Subscript	Description
c	compression
e	expansion
h	heater
k	cooler



r	regenerator
max	maximum
m	mean
c-k	interface between compression space and cooler
k-r	interface between cooler and regenerator
r-h	interface between regenerator and heater
h-e	interface between heater and expansion space
Greek	
$\varepsilon$	regenerator effectiveness
$\Delta P$	pressure drop
$\mu$	dynamic viscosity (Pa.s)
$\rho$	density ( $\text{kg/m}^3$ )
$\gamma$	Gamma
$\varepsilon$	regenerator effectiveness

## I. INTRODUCTION

Energy production through clean and green sources has found great interest recently, because the proportion of high oil prices and fuel oil have caused severe problems to the environment. Researchers consider renewable energy resources as the best alternative to the trendy energy sources, these source of renewable energy it can be used as an input energy source for heat the Stirling engines [1, 2]. Stirling engines are mechanical devices theoretically working on the Stirling cycle and using a compressible fluid, such as air, helium, hydrogen and nitrogen. They can also use vapors as working fluid [3, 4]. Stirling engines have been used in various types of applications such as energy converters for Stirling/Dish, coolers, and heat pumps, residential CHP etc. In recent years they were applied in the renewable energy fields. The Stirling engine systems design and development has been signified for combined heat and power systems[5]. In fact, the Stirling engines are friend to the environment than the internal combustion engines so found great interest[6] Developing Stirling engine and improving its performance for getting its highest thermal power have been the concern of some researchers around the world [4, 7]. Principally to design an engine firstly has to find a set of parameters based on experiences and secondly optimize the design for other parameters to improve the performance[8]. A lot of parameters like power piston and displacer geometries, heat exchanger geometries, temperatures, pressure, engine working frequency, have direct effect on the engine output power and efficiency and they complicate the design procedure[5]. To understand the working fluid thermodynamic behavior of Stirling engines,

there are a lot of techniques for Stirling cycle analysis. These techniques are categorized from zero to fourth order analysis [9-11]. Rajesh Arora et al. [12] optimized power output, overall thermal efficiency and thermo-economic function of solar powered Stirling heat engine with regenerative heat losses, conducting thermal bridging losses using evolutionary algorithm based on second version of non-dominated sorting genetic algorithm (NSGA-II). Mohammad H. Ahmadi et al.[13] developed finite time thermodynamic analysis based on external irreversibility's while internal irreversibility's such as friction, entropy generation, and pressure drop were not considered. The finite-time thermodynamics have introduced to optimize the performance of a solar powered Stirling engine by Chen et al [14]. The genetic algorithm was used to obtain the maximum output power of a Stirling engine by determining the thermal efficiency. Mahkamov et al. [15] have presented a mathematical model of the (LTD) Stirling engine which use for the engine mechanical losses and the working process hydraulic and heat losses. The effect of irreversibility on the engine performance and heat losses was studied by Hirata[16] . Was obtained the optimal performance and design parameters for maximum power and efficiency. A lot of researchers studied the genetic algorithm to optimize the performance of Stirling engines. However, in this article the Genetic algorithm (GA) code coupled to the second-order mathematical model accounting for heat and mechanical loss is presented to optimize the moderate temperature differential Stirling engine. The purpose of the article is to determine the optimal design parameters of moderate temperature differential gamma type Stirling engine.

## II. SYSTEM DESCRIPTION

A solar powered  $\gamma$  Stirling engine is illustrated in Fig. 1. It includes of mirrors arranged in a parabolic mode to form a dish collector and thermal absorber on the focal point where collector collects all the solar radiations. A cavity absorber is created at the focal point which transfers collected solar energy to the working gas in engine's displacer hot end. The solar dish is installed with a sun tracker which tracks the sun in order to have maximum solar energy transfer to the engine when the sun moves during day time as illustrate in Fig. 1.

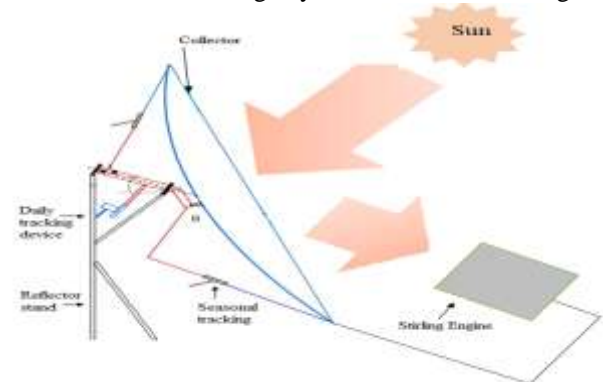


Fig. 1 Schematic diagram of solar parabolic dish system

Gamma Stirling engine is one of the Stirling heat engine types, it consists of compression piston and expansion piston, and conventional heat exchangers: cooler, regenerator, and heater. The exchanger and the engine pistons are connected together, as shown in Fig. 2. The engine uses can be powered by any source of energy (combustion energy, solar energy, etc.). The one of the pistons converts gas pressure into mechanical power, when the other piston is used to move gas between hot and cold spaces. This was analyzed by Urieli [17] and obtained good result, by using of an adiabatic and simple method the engine presents an excellent theoretical efficiency. Table 1 bellow shown the engine geometry is defined according to the direct measurements of few parts of the engine, these data it can be used as input data in the simulations and to hypothesis regarding the inaccessible parts. These data remain constant for every simulation.

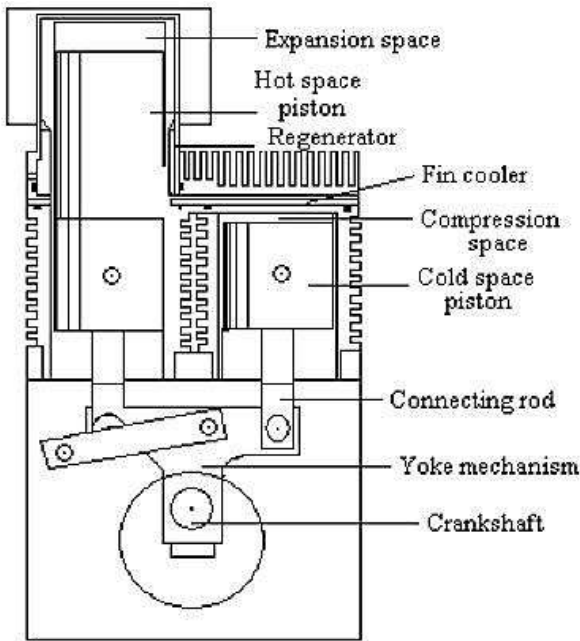


Fig. 2 gamma Stirling engine

Table -1 Operating parameters of the engine geometry

Parameter	Value	Parameter	Value
Compression clearance volume	8 (cm <sup>3</sup> )	Cooler heater temperature	300 /923(K)
Expansion clearance volume	10 (cm <sup>3</sup> )	Engine speed	50 (Hz)
Expansion piston diameter	5.590 (cm)	Width of slots	0.05320 (cm)
Compression piston diameter	5.590 (cm)	Height of slots	0.3315 (cm)
Yoke length, height (b1,b2)	354 (cm)	Cooler length	4.83 (cm)
Crank radius	85 (cm)	Number of slots	388

Alpha	95.6 (deg)	External housing diameter	0.07620 (cm)
engine average pressure	2 (bar)	Internal housing diameter	0.07330 (cm)

Parameter	Value
Internal matrix diameter	0.05944 (cm)
Regenerator length	0.03518 (cm)
foil thickness	0.6953 (cm)
unrolled length of foil	60.75 (cm)
Width of slots	0.09590 (cm)
Height of slots	0.3556 (cm)
Heater length	3.79 (cm)
Number of slots	220

### III. THERMODYNAMIC ANALYSIS

The Stirling engine mathematical model is used to describe the working process inside the engine. The gas flow inside the engine was divided into five control volumes and the mass and energy conservation equations are applied to each of the control volumes. The engine operation was described by system of equations also includes the ideal gas state equation[18] and Urieli [17] developed the second-order mathematical model of Stirling engines is modified by dividing the regenerator into several control volumes. The divide of the engine's gas flow into control volumes is shown in Fig. 2. The assumptions in this model as follows:

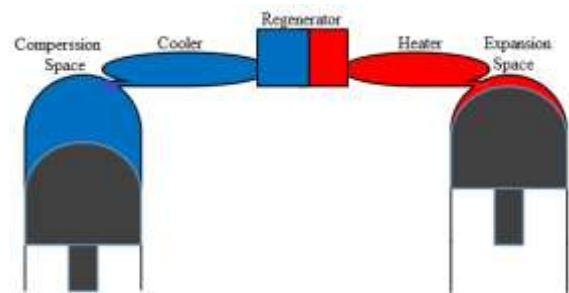


Fig. 3 The calculation scheme of the conventional Stirling engines

- 1) In each control volume the pressure derivative is the same.
- 2) There are no gas leakages through sealing rings of the displacer rod and of the power pistons.
- 3) The working gas is considered as a perfect gas in each control volume.



- 4) The walls of the power piston and displacer cylinders are thermally insulated.
- 5) The engine operates at steady state conditions

### A. Ideal adiabatic numerical formulation

Pressure in the engine can be found as:

$$P = MR / \left( \frac{V_c}{T_c} + \frac{V_k}{T_k} + \frac{V_r}{T_r} + \frac{V_h}{T_h} + \frac{V_e}{T_e} \right) \quad (1)$$

where  $P$  is the pressure (pa);  $M$  is total mass of the working gas in the engine (kg);  $R$  is the gas constant (J/kg. k);  $V_i$  is the control volumes ( $m^3$ );  $T_i$  is the gas temperature in control volumes (K);  $i = c, k, r, h, e$ .

Pressure variation can be calculated by:

$$dP = -\gamma P \left( \frac{dV_c}{T_{ck}} + \frac{dV_e}{T_{he}} \right) / \left( \frac{V_c}{T_{ck}} + \gamma \left( \frac{V_k}{T_k} + \frac{V_r}{T_r} + \frac{V_h}{T_h} \right) + \frac{V_e}{T_{he}} \right) \quad (2)$$

Mass equation

$$m_i = \frac{PV_i}{RT_i} \quad i = c, k, r, h, e \quad (3)$$

Mass variation

$$\begin{cases} dm_e = \left( PdV_e + V_e \frac{dP}{\gamma} \right) / (RT_{he}) \\ dm_c = \left( PdV_c + V_c \frac{dP}{\gamma} \right) / (RT_{ck}) \\ dm_i = m_i \frac{dP}{P} \quad i = k, r, h, \end{cases} \quad (4)$$

The gas mass flow rate between the control volumes can be defined as follows:

$$\begin{cases} \dot{m}_{ck} = -dm_c \\ \dot{m}_{kr} = \dot{m}_{ck} - dm_k \\ \dot{m}_{rh} = m_{he} + dm_h \\ \dot{m}_{he} = dm_e \end{cases} \quad (5)$$

The conditional temperature of the gas between the compression, cooler space and the heater expansion space are defined as follows:

$$\begin{cases} \text{if } \dot{m}_{ck} > 0, & T_{ck} = T_c, & \text{else, } & T_{ck} = T_k \\ \text{if } \dot{m}_{he} > 0, & T_{he} = T_h, & \text{else, } & T_{he} = T_e \end{cases} \quad (6)$$

where  $\dot{m}_{ck}$ ,  $T_{ck}$  is mass flow rate and temperature between the compression and the cooler spaces (kg/s), (K), respectively;  $T_c$  is the temperature of the gas in the compression space (K);  $T_k$  is the temperature of the cooler space (K);  $\dot{m}_{he}$ ,  $T_{he}$  is mass flow rate and temperature between the heater and the expansion spaces (kg/s), (K), respectively;  $T_h$  is the temperature of the gas in the heater space (K);  $T_e$  is the temperature of the expansion space (K)

The temperature variation in the compression space and the expansion space are defined as follows:

$$\begin{cases} dT_e = T_e \left( \frac{dP}{P} + \frac{dV_e}{V_e} - \frac{dm_e}{m_e} \right) \\ dT_c = T_c \left( \frac{dP}{P} + \frac{dV_c}{V_c} - \frac{dm_c}{m_c} \right) \end{cases} \quad (7)$$

The energy conservation equations for the cooler, regenerator and heater spaces, respectively, can be expressed by the following equations:

$$\begin{cases} dQ_k = \frac{V_c}{R} \frac{dP}{\gamma} + c_p \left( T_{ck} dm_c - T_{kr} (dm_c + dm_k) \right) \\ dQ_r = \frac{V_r}{R} \frac{dP}{\gamma} + c_p \left( T_{kr} (dm_c + dm_k) - T_{rh} (dm_c + dm_k + dm_r) \right) \\ dQ_h = \frac{V_h}{R} \frac{dP}{\gamma} + c_p \left( T_{rh} (dm_c + dm_k + dm_r) - T_{he} (-dm_e) \right) \end{cases} \quad (8)$$

where  $Q_k$ ,  $Q_r$  and  $Q_h$  are the heat flow rates in the cooler, the regenerator and the heater (W), respectively.

The work done on or by the working gas inside the compression and the expansion space can be calculated as:

$$dW_e = PdV_e \quad dW_c = PdV_c \quad (9)$$

where  $W_c$  and  $W_e$  are works done on or by the gas in the compression and expansion spaces, respectively (J).

### B. Non-ideal heat exchangers

For the systems which have non-ideal regenerator, when the working gas flows through the cooler to the heater, on exit from the regenerator it will have a temperature comparatively lower than that of the heater. This will result in more heat being supplied externally over the cycle by the heater in increasing the temperature of the gas to that of heater. Likewise, when the working gas flows through the heater to the cooler, then an extra cooling load will be burdened on the cooler [19] as follows:

$$\begin{cases} Q_h = Q_{h_i} + Q_{r_i}^{1-\varepsilon} \\ Q_k = Q_{k_i} - Q_{r_i}^{1-\varepsilon} \end{cases} \quad (10)$$

### C. Non-ideal regeneration

The effectiveness of the regenerator  $\varepsilon$  is given starting from the equation below:

$$\varepsilon = \frac{NTU}{NTU + 1} \quad (11)$$

where  $NTU$  values can be found in terms of the Stanton number by:

$$NTU = \frac{ST \cdot Awg}{2A} \quad (12)$$

where  $ST$  is Stanton number it can be found from the average Reynolds number determined over one cycle.



**D. Pumping work loss**

While the working gas flow between the cooler, regenerator, and heater volumes the fluid friction will result in pressure drop between the variable volumes. This reduces the output power of the engine and it's known as pumping work losses[20]. Pressure drop is evaluated from:

$$\Delta P = - \frac{2 f_r \mu U V}{A_{free} d_h^2} \quad (13)$$

where  $f_r$  is the friction coefficient can be calculated for the Reynolds for the specific fluid conditions at a given time for specific heat exchanger;  $\mu$ ,  $U$ ,  $V$ ,  $d_h$ , and  $A$  denote the working gas dynamic viscosity (Pa.s), the fluid mean bulk velocity (m/s), the void volume (m<sup>3</sup>), the hydraulic diameter (m) and the internal free flow area (m<sup>2</sup>), respectively.

The thermal efficiency of the Ideal Adiabatic cycle is given in terms of the energy values accumulated at the end of the cycle by:

$$\eta_i = w_i / Qh_i = (Qh_i + Qk_i) / Qh_i \quad (14)$$

The thermal efficiency of the non-ideal engine is given by:

$$\eta = w / Qh = (Qh + Qk) / Qh \quad (15)$$

IV. OPTIMIZATION MODELING

**A. Introduction to the Genetic algorithms**

Genetics algorithm is a random optimization method based on the technique of natural selection for survival as the procedure in order to get the optimal results [21]. The continuous GA is applied in this work for the quantitative restriction and the reduction of the computing time[22].

**B. Definition of the objective function**

The heat exchangers of moderate and High-temperature differential Stirling engines, namely a heater, a cooler and a regenerator should be carefully designed because these greatly affect the engine performance. Any deviation from optimal design dimensions, spatially of the regenerator, may result in a significant drop in the engine's output power [23]. In this work various original engine operational and design parameters are accepted to be fixed as constant values. There are only six engine designs parameters are defined as variables. These are heater slots height, heater effective length, cooler slots height, cooler effective length, regenerator foil unrolled length and regenerator effective length **Table 2**:

$$\text{chromosome} = (H_H; l_H; H_K; l_K; L_r; l_r) \quad (16)$$

The indicated power is used as the objective function and is calculated using the developed second-order mathematical model for Stirling engines:

$$\text{inp power} = f(\text{chromosome}) = f(H_H; l_H; H_K; l_K; L_r; l_r) \quad (17)$$

Table -2

The variables	Optimization constraints	
	Lower bound (cm)	Upper bound (cm)
Heater slots height	0.03	3
Heater effective length	0.3	30
Cooler slots height	0.03	3
Cooler effective length	0.4	40
Regenerator foil unrolled	700	500
Regenerator effective length	0.3	30

**C. Genetic algorithm procedure**

The guessed initial chromosome in the initial population which is created by using the random procedure has no effect on the convergence of the solution, of the GA. The generated initial population is in the matrix formation of various chromosomes. But the size of the population affects the convergence in the optimization procedure. To operate GA number of chromosomes is better to be between 30 and 100 [24]. The number of chromosomes in a generation of 30 is used in this work. The chromosome value which is the indicated power is evaluated by the fitness function for locating in the value map of each generation [25]

To determine the survival chromosomes for the next generation the fitness value of each chromosome is descending order. After that the number of survival chromosomes has found by the selection rate of 0.5, Then single point crossover is used for the mating process, and the Fittest chromosomes of the ranking are randomly selected to be the parents for the reproduction operation, The mutation operator of rate 0.2 is used as a tool to avoid finding only the local solution, and Finally, the new generation is produced and the population of new design parameters in this generation is then evaluated by the developed thermodynamic model and the fitness function is checked for the ranking until the solution found satisfying the termination condition[15, 22].

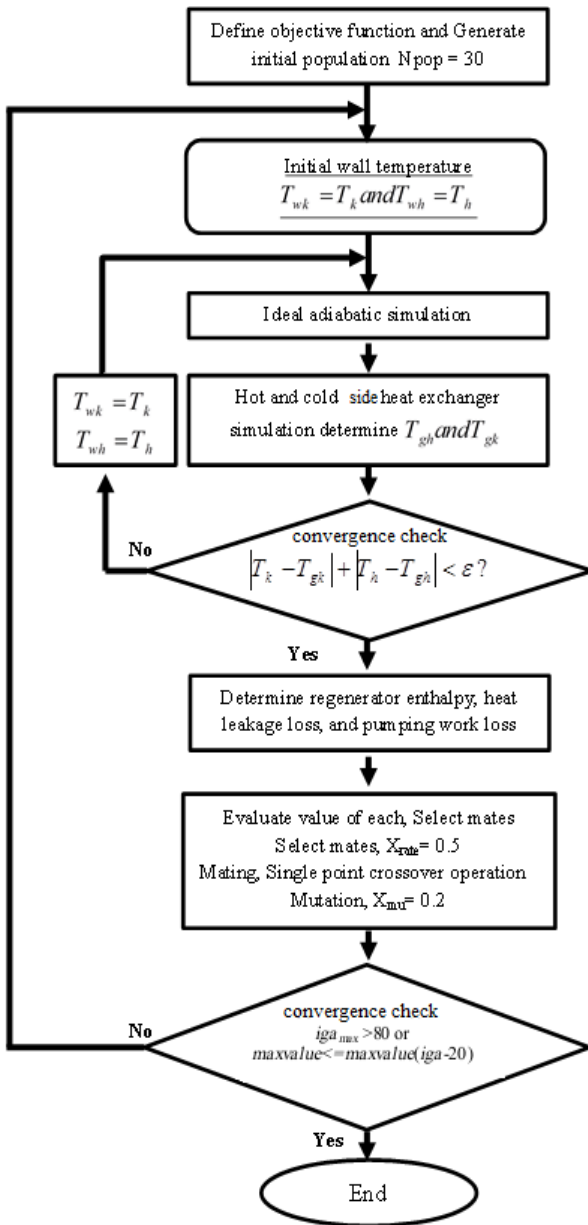


Fig. 4 Simulation flow diagram

### V. RESULTS AND DISCUSSION

In order to evaluate the effect of the heat exchanger, engine operating frequency (Freq), and the hot source temperature (TH) on the performance of the Stirling engine, all the parameter was kept constant except the cooler length (lk), its vary between (0.038-0.048) cm, the regenerator length from (0.005-0.04) cm, the heater length from (0.035-0.075) cm, the operating frequency from (40-60) Hz, and the hot side temperature from (723-1023) K the result obtained are as flow:

The effect of the cooler, regenerator, and the heater on the output power of the engine is illustrated in Fig.5-7. It's clear

from Fig. 5. The output power gets increase and gets to the maximum when the cooler length gets the value between (0.038-0.04) cm after that start decreasing. Fig. 6. Shown that the output power gets to the maximum value at the beginning when the regenerator length was small and then start decrease, the best value of the output power when the regenerator length gets the value between (0.005-0.01) cm. Fig. 7 illustrate that the output power takes the high value when the heater length take value between (0.036-0.04) cm and then starting decrease. It can be seen from Fig. 8 that the output power gets increasing by increase of the hot side temperature and reach to the maximum value at 973K after that start decrease.

The optimal value of output power, and thermal efficiency are obtained from implementing evolutionary algorithm based on genetic algorithm (GA), the algorithm was coupled to the second-order mathematical model, the engine was powered by solar energy the high temperature was 1023 K applied to three different types of working fluid air, helium, and hydrogen respectively. When the air used as working gas and hot side temperature was 923 K the output power was 290.06 watt for adiabatic analysis and 228.5 watts for simple analysis, when the helium and the hydrogen were used at same operating condition with air the obtained power output were 275.4 and 290.06 watts for adiabatic analysis 234.5 and 268.8 watts for simple analysis respectively. Comparison between the results get from the simulation by using the original parameters and the result from the optimal parameters shown in Table 3.

Table -3 The ideal adiabatic power and the actual power

Gas type	Original data		Optimal data	
	$P_i$ (w)	$P$ (w)	$P_i$ (w)	$P$ (w)
Air	162.5	140.6	290.0	228.5
Helium	161.2	141.9	275.4	234.5
Hydrogen	162.5	150.3	290.0	268.8
			6	

Because of the Unstably of the heat get from the solar during the day time the solar collector provides 1023 K as maximum temperature and 723 K as minimum temperature. The output power and the thermal efficiency get increase when the applied temperature increased and vice versa Fig. 9 illustrate the power output when the air was used as working fluid in temperature range (723-923) K the actual power output means the power gets from the simple analysis and Fig. 10. Shown the thermal efficiency is increased by increasing the hot side temperature and vice versa.

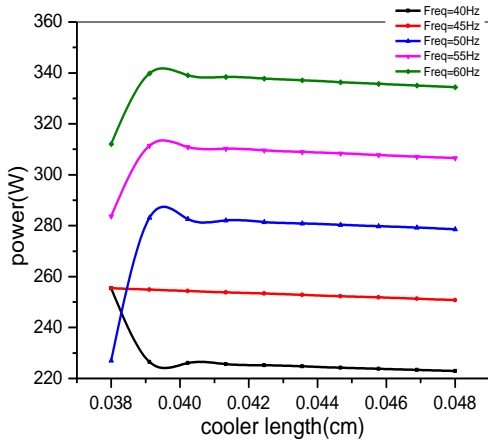


Fig. 5 Relationship between cooler length and engine power (temperature=923K)

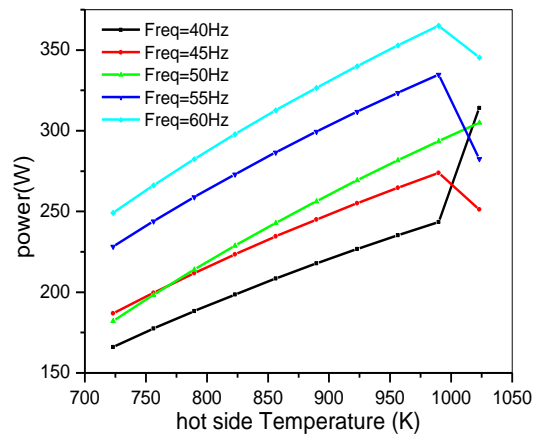


Fig. 8 Relationship between hot source temperature and engine power

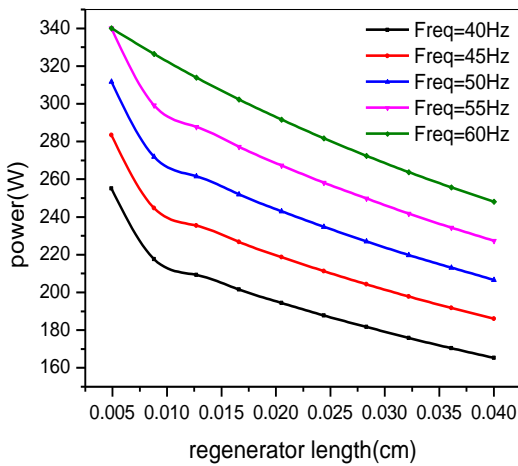


Fig. 6 Relationship between regenerator length and engine power (temperature=923K)

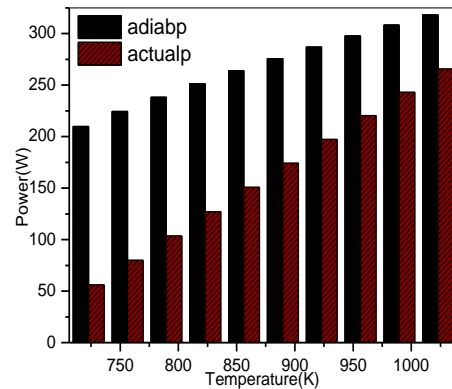


Fig. 9 Relationship between hot source temperature and engine power

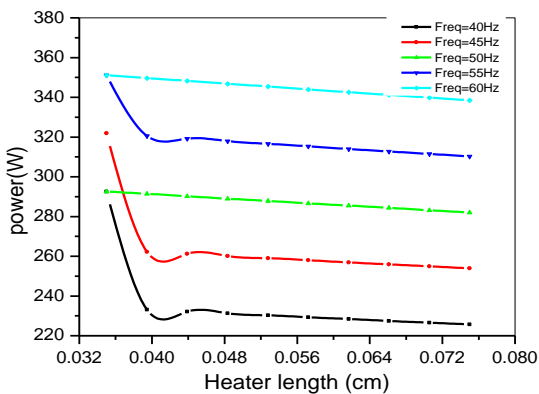


Fig. 7 Relationship between heater length and engine power (temperature=923K)

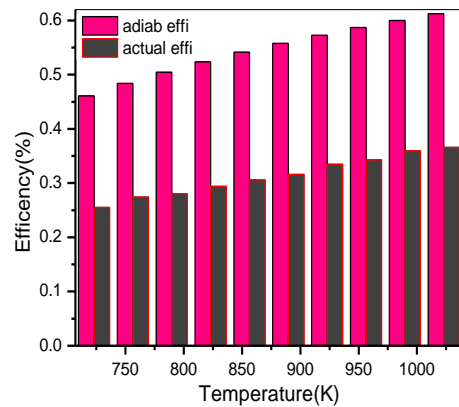


Fig. 3 Relationship between hot source temperature and engine efficiency



Fig. 11 illustrate the variation of the compression, expansion and total volume as a function of the crank angle. The compression volume reaches its maximum value when the cycle has not started yet, because the flow direction of the working fluid flowing from compression space to the expansion space. Starting in the compression space, the working fluid is pressed through the cooler, the regenerator and the heater to the expansion space, successively. As the total volume  $V_t$  increases, the volume of the compression space  $V_c$  increases too, whereas the volume of the expansion space  $V_e$  decreases. After the working fluid was expanded in the expansion space, the flow moves back to the compression space.

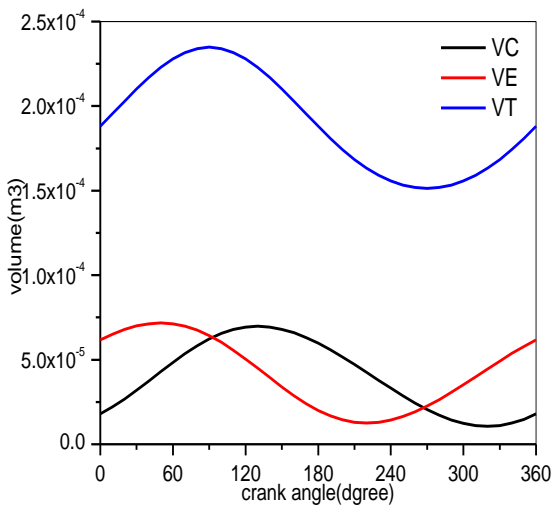


Fig. 11 Variation of the compression, expansion and total volume

The thermal energy transferred and the total work output over an ideal adiabatic cycle is illustrated in Fig. 11. The energy transferred to cooler or to the heater is lower than the maximum heat transferred to and from the regenerator matrix. It is clear from the Fig. 5b that the energy variation during the operation is changes when the optimal data were applied to the system specially in the heater and regenerator as result of that the system provides batter work output with respect to original engine geometry the air was the working gas. Fig. 13 shown the energy variation in the compression and expansion space obtained during the cycle as function of the crank angle.

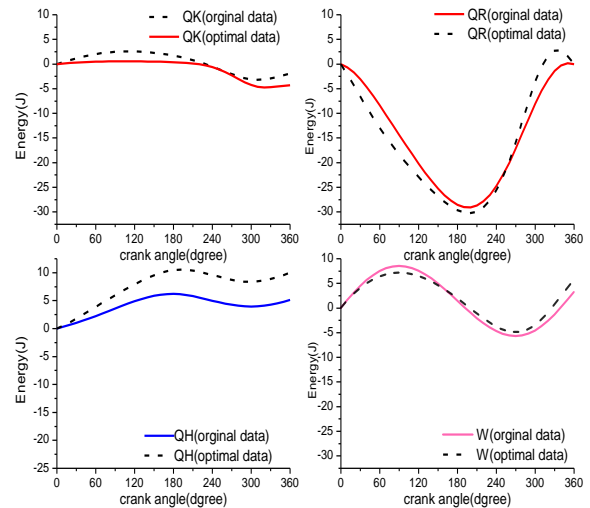


Fig. 12 Heat transferred within the different cells

Fig.14 showed the working gas temperature in the compression and expansion spaces during the cycle while a mean effective temperature for the working gas was calculated. Also, the figure showed the temperature variation in the expansion space and compression space. As illustrated when the optimal value was applied to the system, the temperature variation curve is varying in the temperature range of (235-279.5 K) on the cold side and from (785.3-938.4K) in the hot side this make the engine work more stable.

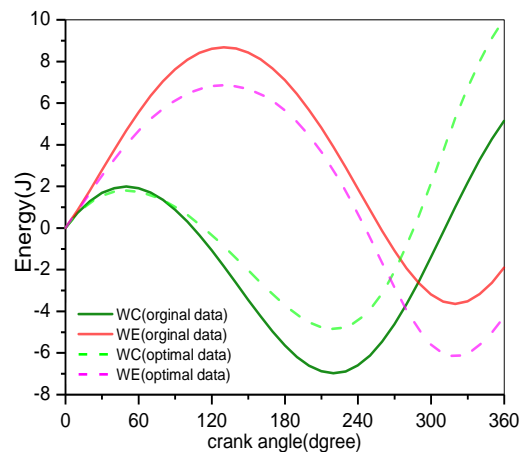


Fig. 13 Energy Variation of the compression and the expansion space

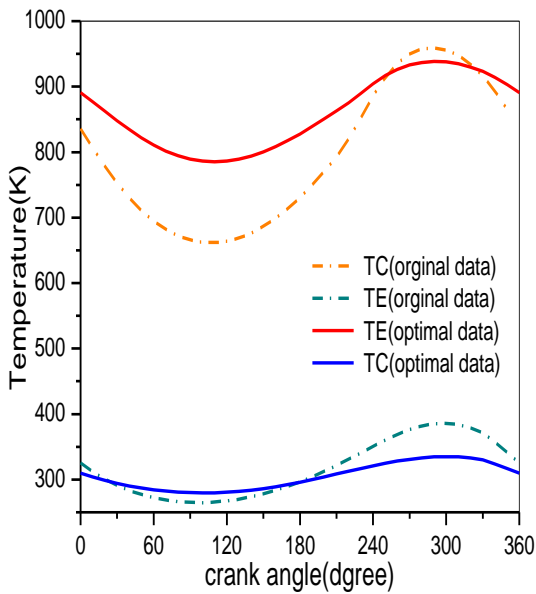


Fig. 14 Temperature variation of the working gas

Fig. 15 Show the mass flow rate variation in various spaces with crank angle the figure illustrate that the variation amplitude of flow rates is greater in the cold space. The positive flow rate period is more important than the negative flow rate; and there are values of the phase for which all the flow rates are equal. This phenomenon occurs at the time of each extreme of pressure.

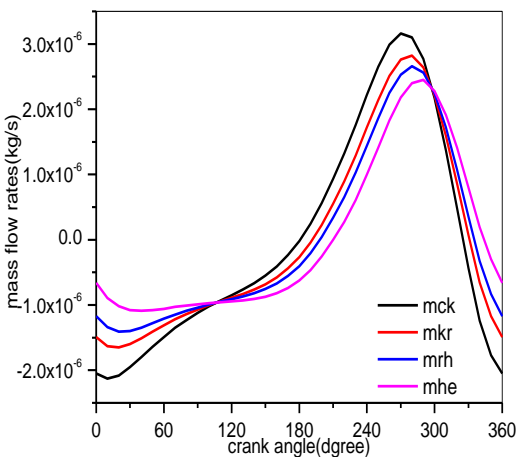


Fig. 15 working gas mass flow rate

Fig. 16 illustrate pressure variation in the expansion and compression space of the engine and the two pressure waveforms are nearly in phase, which backing low pressure

losses in the heat exchangers Furthermore, it is observed that the maximum pressure is at 290° for both analyses.

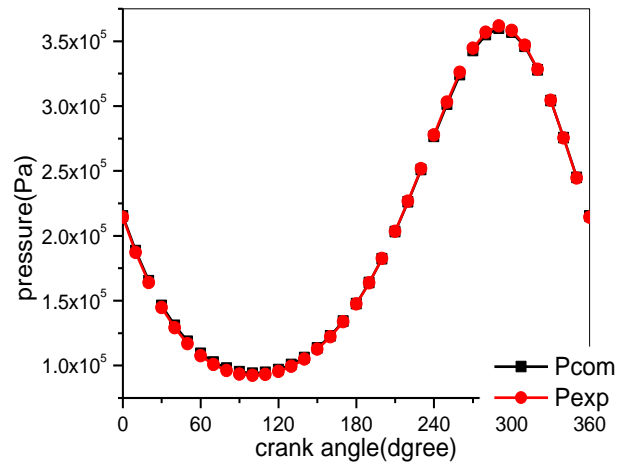


Fig. 16 Pressure Variation of the compression and the expansion space

Fig. 17 Show the pressure reduction of cooler, regenerator and heater on the Stirling engine. Note the relative magnitude of the regenerator pressure drop with respect to those of the heater and cooler, in the beginning, the pressure drop in the cooler start with -200Pa and then going down until reach -800Pa at 90° and start to increase until reach to the maximum at 290°, but the variation in the regenerator is more stable it is varying between (-370-245)Pa, the variation in the heater is similar to the variation in the cooler ,this process cause losses in the output power named by pumping work losses. Fig,18, shown the variation of the output power and the thermal efficiency for different absorber temperature.

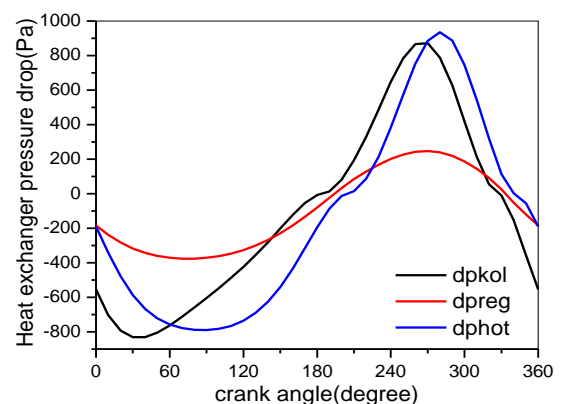


Fig. 17 Heat exchanger pressure drops virus crank angle

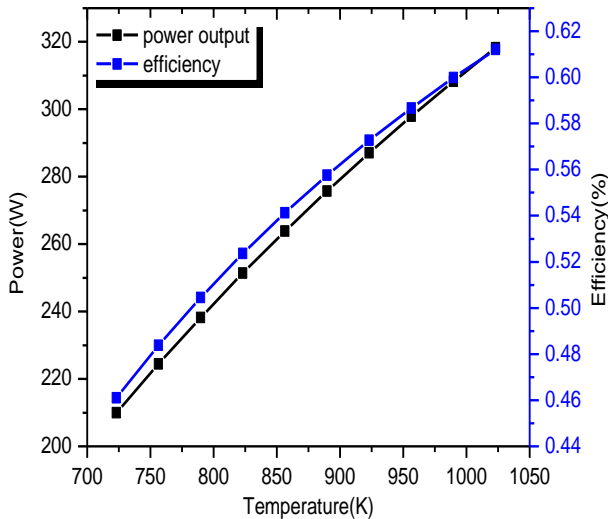


Fig. 18 Variation of the output power and the thermal efficiency for different absorber temperature

Table -4 The optimal values obtained from the simulation result

The variables (cm)	The optimal value
Heater slots height	0.084
Heater effective length	6.977
Cooler slots height	0.057
Cooler effective length	3.866
Regenerator foil unrolled	686.4
Regenerator effective length	0.489

## VI. CONCLUSION

In this work, the developed second-order mathematical mode of the Stirling engine Coupled with the genetic algorithm (GA) optimization model was used in order to study the performance and design optimization of the Stirling engine. In the simulation, the Stirling thermodynamic cycle heat transfer limitations and pumping losses was taken into account. Results show that a set of design parameters for the engine were obtained which have strongly effect on the engine performance. The comparison between the results gets from the simulation by using the original parameters and the result from the parameters when the engine was powered by external energy the high temperature was 923 K applied to the working fluid the total output power when the air, helium, and hydrogen used as working fluid. The result showed that he

working temperature is important, for Stirling engine system the increase of the input source temperature is very important the high temperature gives better system performance. The change of the regenerator dimension was optimized the engine output power. When the optimal design parameters are introduced in the model, the engine power increases from 140.58(watts) to 228.54(watts) engine power is enhanced by approximately 50%, when the heating temperature is 923 (K) and working the air is used as working fluid.

## ACKNOWLEDGEMENT

The author would like to acknowledge with deep thanks and profound gratitude Mr. Osama Mahmoud Mohammed Ali of Daniya Center for Publishing and Printing Services, Atbara, who spent many hours in editing, re – editing of the manuscript in compliance with the standard format of international journal of engineering applied science and technology (IJEAST).

## VII. REFERENCE

- [1] Tina GM and G. S., Probabilistic modelling of hybrid solar/wind power system with solar tracking system. *Renew Energy*, 2011: p. 1719–27.
- [2] Panayiotou G, Kalogirou S, and T. S., Design and simulation of a PV and PV Wind standalone energy system to power a household application. . *Renew Energy*, 2012. 37:: p. 355-63.
- [3] Tlili I and M. SA, Thermodynamic evaluation of a second order simulation for Yoke Ross Stirling engine. *Energy Convers Manage*, 2013. 68:: p. 149-60..
- [4] Hosseinzade, H. and H. Sayyaadi, CAFS: The Combined Adiabatic–Finite Speed thermal model for simulation and optimization of Stirling engines. *Energy Conversion and Management*, 2015. 91: p. 32-53.
- [5] Hooshang, M., et al., Optimization of Stirling engine design parameters using neural networks. *Renewable Energy*, 2015. 74: p. 855-866.
- [6] B, K. and W. S, A review of solar-powered Stirling engines and low temperature differential Stirling engines. *Renew Sustain Energy Rev*, 2003. 7(2): p. 131-54.
- [7] Ahmadi, M.H., et al., Thermodynamic analysis and multi objective optimization of performance of solar dish Stirling engine by the centrality of entransy and entropy generation. *International Journal of Electrical Power & Energy Systems*, 2016. 78: p. 88-95.
- [8] Yaqia L, Yalinga H, and W. W., ptimization of solar-powered Stirling heat engine with fi nite-time thermodynamics. . *Renew Energy* 2011: p.;36:421 e7 .
- [9] Rodger, D., W. Scottt, and T. Roy, Review of Computational Stirling Analysis Methods, in 2nd International Energy Conversion Engineering Conference. 2004, American Institute of Aeronautics and Astronautics.
- [10] Cheng C-H, Y.Y.-J., Numerical model for predicting thermodynamic cycle and thermal ef iciency of a beta-type Stirling engine with rhombic-drive mecha-nism. 2010( *Renew Energy* ): p. 35:2590e 601 .
- [11] Makhkamov K, D.D., Three-dimensional CFD modeling of a Stirling engine. In: *Stirling Engine in Conference*, . 2003.: Rome, Italy; .



- [12] Arora, R., et al., Multi-objective thermo-economic optimization of solar parabolic dish Stirling heat engine with regenerative losses using NSGA-II and decision making. *International Journal of Electrical Power & Energy Systems*, 2016. 74: p. 25-35.
- [13] Ahmadi, M.H., et al., Optimization of powered Stirling heat engine with finite speed thermodynamics. *Energy Conversion and Management*, 2016. 108: p. 96-105.
- [14] Chen C-L, Ho C-E, and Y. H-T., Performance analysis and optimization of a solar powered Stirling engine with heat transfer considerations. *Energies* 2012: p. 3573-85.
- [15] Kraitong, K. and K. Mahkamov, Optimization of low temperature difference solar Stirling engines using genetic algorithm. may 2011.
- [16] K., H., Mechanical loss reduction of a 100 W Class Stirling engine. *International Stirling Engine Conference*, 2003. : p. p. 338 e 43.
- [17] Urieli I and B. DM., *Stirling cycle engine analysis*. . 1984.(A. Hilger Ltd.;).
- [18] Timoumi, Y., I. Tlili, and S. Ben Nasrallah, Design and performance optimization of GPU-3 Stirling engines. *Energy*, 2008. 33(7): p. 1100-1114.
- [19] AnaC.Ferreira, et al., Modelling and Cost Estimation of Stirling Engine for CHP Applications 2014: p. 978-1-61804-221-7.
- [20] Strauss, J.M. and R.T. Dobson, Evaluation of a second order simulation for Sterling engine design and optimisation. *Energy in Southern Africa* May 2010. 21 No 2
- [21] D. E. Goldberg, *Genetic Algorithms in Search, Optimization & Machine Learning*, in *Genetic Algorithms in Search*, ISBN, Editor. 1989, , Addison-Wesley Publishing Company: USA, . p. 0- 201-15767-5.
- [22] R. L. Haupt and S. E. Haupt, *Practical Genetic Algorithm*. Edition 2nd, ed. 2004, USA: John Wiley & Sons, .
- [23] Jafar Zarinchang and A. Yarmahmoudi, Optimization of Thermal Components in a Stirling Engine. 2009. Volume 4,(Issue 1, ): p. .
- [24] 24. A. M. S. Zalzala and P.J. Fleming, *Genetic Algorithms in Engineering Systems*,. 1997, UK The Institution of Electrical Engineers , .
- [25] Shopova, E.G. and N.G. Vaklieva-Bancheva, BASIC—A genetic algorithm for engineering problems solution. *Computers & Chemical Engineering*, 2006. 30(8): p. 1293-1309.

# IJEAST

INTERNATIONAL JOURNAL  
OF ENGINEERING APPLIED SCIENCE  
AND TECHNOLOGY

## ABOUT IJEAST

International Journal of Engineering Applied Science and Technology (IJEAST) is a peer-reviewed, open access journal that publishes high-quality research papers in the field of Engineering, Applied Science and Technology.

IJEAST aims to provide a platform for researchers, academicians, and professionals to share their innovative ideas, research findings, and practical experiences with the global scientific community.

## FOCUS AREAS

- Engineering
- Applied Science
- Technology
- Innovation & Development
- Interdisciplinary Studies



### PEER REVIEWED

All submissions are rigorously peer reviewed to ensure quality.



### OPEN ACCESS

Free and unrestricted access to research for all.



### GLOBAL REACH

Connecting researchers and professionals worldwide.



### TIMELY PUBLICATION

We ensure a swift and efficient publication process.



For more information, visit our website  
[www.ijeast.com](http://www.ijeast.com)



INTERNATIONAL JOURNAL  
OF ENGINEERING APPLIED SCIENCE  
AND TECHNOLOGY

✉ [editor@ijeast.com](mailto:editor@ijeast.com)

🌐 [www.ijeast.com](http://www.ijeast.com)

📍 India



2455-2143