



IJEAST

INTERNATIONAL JOURNAL
OF ENGINEERING APPLIED SCIENCE
AND TECHNOLOGY



VOLUME : 6 ISSUE : 8 Print / Issue Publication Date: 14-Mar-2022



ISSN : 2455-2143



DOI : 10.33564/IJEAST.2021.v06i08.013

Indexed In



WWW.IJEAST.COM

editor@ijeast.com



HEALTH MONITORING SYSTEM USING IOT

Shubham Sadanande, Shreya Gajul, Nikita Gaikwad, Ashwini Latpate, Ashwini Wath
Dept. Computer Engineering,
JSPM's BSIOTR Wagholi, Maharashtra, India

Prof. Vaibhav Rewaskar
JSPM's BSIOTR Wagholi, Maharashtra, India

Abstract— Health monitoring systems have rapidly evolved recently, and smart systems have been proposed to monitor patient current health conditions, in our proposed and implemented system, we focus on monitoring the patient's heart rate, and his body temperature. Based on last decade statistics of medical records, death rates due to hypertensive heart disease, shows that the blood pressure is a crucial risk factor for atherosclerosis and ischemic heart diseases; thus, preventive measures should be taken against high heart rate which provide the ability to track, trace and save patient's life at appropriate time is an essential need for mankind. Nowadays, Globalization demands Smart cities, which involves many attributes and services, such as government services, Intelligent Transportation Systems (ITS), energy, health care, water and waste. This paper proposes system architecture for smart healthcare based on GSM and GPS technologies. The objective of this work is providing an effective application for Real Time Health Monitoring and Tracking. The system will track, trace, monitor patients and facilitate taking care of their health; so efficient medical services could be provided at appropriate time. By using specific sensors, the data will be captured and compared with a configurable threshold via microcontroller which is defined by a specialized doctor who follows the patient; in any case of emergency a short message service (SMS) will be sent to the Doctor's mobile number along with the measured values through the GSM module. Furthermore, the GPS provides the position information of the monitored person who is under surveillance all the time. Moreover, the paper demonstrates the feasibility of realizing a complete end-to-end smart health system responding to the real health system design requirements by taking in consideration wider vital human health parameters such as respiration rate, nerves signs ... etc. The system will be able to bridge the gap between patients - in dramatic health change occasions- and health entities who response and take actions in real time fashio

Keywords— GPS, GSM, ITS, SMS, etc.

I. INTRODUCTION

The system will track, trace, monitor patients and facilitate taking care of their health; so efficient medical services might be provided at the acceptable time. By using specific sensors, the info are going to be captured and compared with a configurable threshold via microcontroller which is defined by a specialized doctor who follows the patient; in any case of emergency a brief message service (SMS) are going to be sent to the Doctor's mobile number along side the measured values through GSM module. Furthermore, the GPS provides the position information of the monitored one that is under surveillance all the time. Moreover, the paper demonstrates the feasibility of realizing a complete end-to-end smart health system responding to the important health system design requirements by taking in consideration wider vital human health parameters such as respiration rate, nerves signs etc. The system are going to be ready to bridge the gap between patients - in dramatic health change occasions and health entities who respond and take actions in real time fashion.

II. METHODOLOGY

The patient would place his/her finger on the sensing unit. The sensors would sense the heartbeat and the vitals with body temperature and current location The sensed data rates and location are sent to Arduino Uno in the form of signals. The Arduino processes the same data and would transmit the data to the Wi-Fi module and GSM Module The Wi-Fi module would then retransmit the data to the smartphone application. The GSM Module would then send the message if there is any emergency The alert message will be shown in the smartphone application if the sensed rate is more than the desired rate

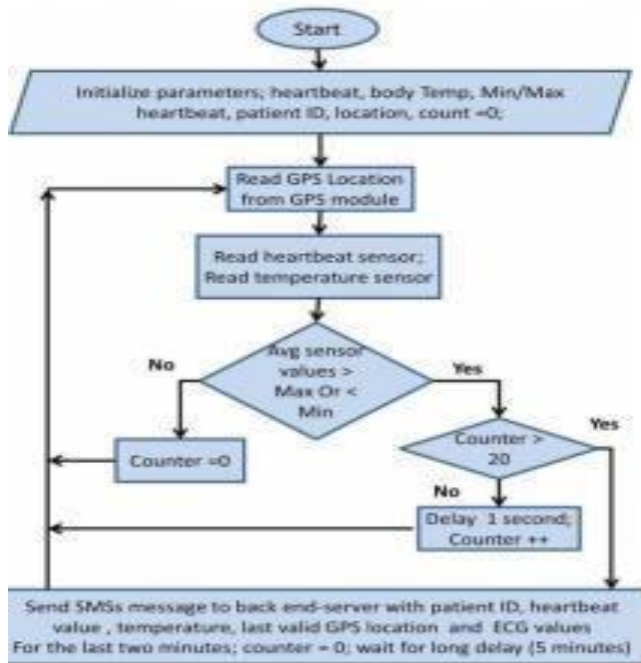


Fig-1: Algorithm Of Health Monitoring

III. CONCLUSION

The objective of this work is providing an effective application for Real Time Health Monitoring and Tracking. The system will track, trace, monitor patients health and facilitate taking care of their health; so efficient medical services could be provided at that appropriate times.

IV. REFERENCES

- 1 T. Mohana Priya, Dr. M. Punithavalli & Dr. R. Rajesh Kanna, Machine Learning Algorithm for Development of Enhanced Support Vector Machine Technique to Predict Stress, Global Journal of Computer Science and Technology: C Software & Data Engineering, Volume 20, Issue 2, No. 2020, pp 12-20
- 2 Ganesh Kumar and P.Vasanth Sena, "Novel Artificial Neural Networks and Logistic Approach for Detecting Credit Card Deceit," International Journal of Computer Science and Network Security, Vol. 15, issue 9, Sep. 2015, pp. 222-234
- 3 Gyusoo Kim and Seulgi Lee, "2014 Payment Research", Bank of Korea, Vol. 2015, No. 1, Jan. 2015.
- 5 Chengwei Liu, Yixiang Chan, Syed Hasnain Alam Kazmi, Hao Fu, "Financial Fraud Detection Model: Based on Random Forest," International Journal of Economics and Finance, Vol. 7, Issue. 7, pp. 178-188, 2015.
- 7 Hitesh D. Bambhava, Prof. Jayeshkumar Pitroda, Prof. Jaydev J. Bhavsar (2013), "A Comparative Study on Bamboo Scaffolding And Metal Scaffolding in Construction Industry Using Statistical Methods", International Journal of Engineering Trends and Technology (IJETT) – Volume 4, Issue 6, June 2013, Pg.2330-2337.
- 8 P. Ganesh Prabhu, D. Ambika, "Study on Behaviour of Workers in Construction Industry to Improve Production Efficiency", International Journal of Civil, Structural, Environmental and Infrastructure Engineering Research and Development (IJCSEIERD), Vol. 3, Issue 1, Mar 2013, 59-66

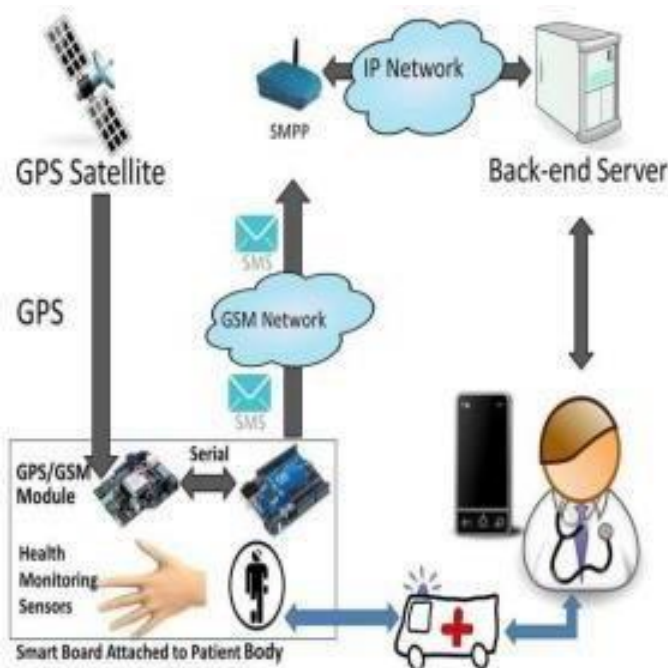


Fig-2 :System Architecture

IJEAST

INTERNATIONAL JOURNAL
OF ENGINEERING APPLIED SCIENCE
AND TECHNOLOGY

ABOUT IJEAST

International Journal of Engineering Applied Science and Technology (IJEAST) is a peer-reviewed, open access journal that publishes high-quality research papers in the field of Engineering, Applied Science and Technology.

IJEAST aims to provide a platform for researchers, academicians, and professionals to share their innovative ideas, research findings, and practical experiences with the global scientific community.

FOCUS AREAS

- Engineering
- Applied Science
- Technology
- Innovation & Development
- Interdisciplinary Studies



PEER REVIEWED

All submissions are rigorously peer reviewed to ensure quality.



OPEN ACCESS

Free and unrestricted access to research for all.



GLOBAL REACH

Connecting researchers and professionals worldwide.



TIMELY PUBLICATION

We ensure a swift and efficient publication process.



For more information, visit our website

www.ijeast.com



INTERNATIONAL JOURNAL
OF ENGINEERING APPLIED SCIENCE
AND TECHNOLOGY

✉ editor@ijeast.com

🌐 www.ijeast.com

📍 India



2455-2143